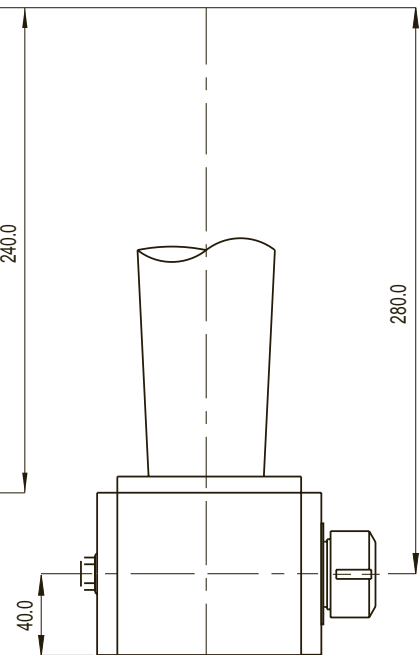
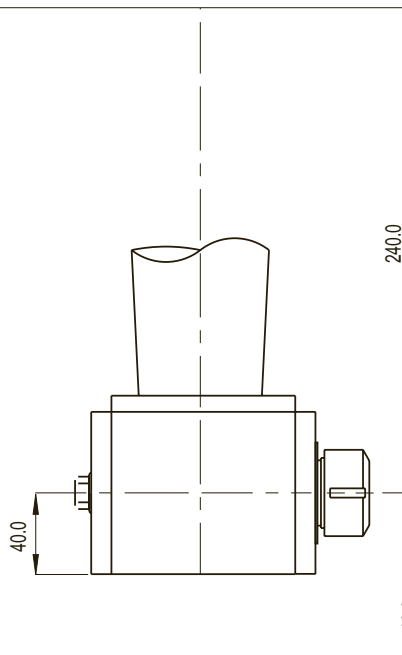
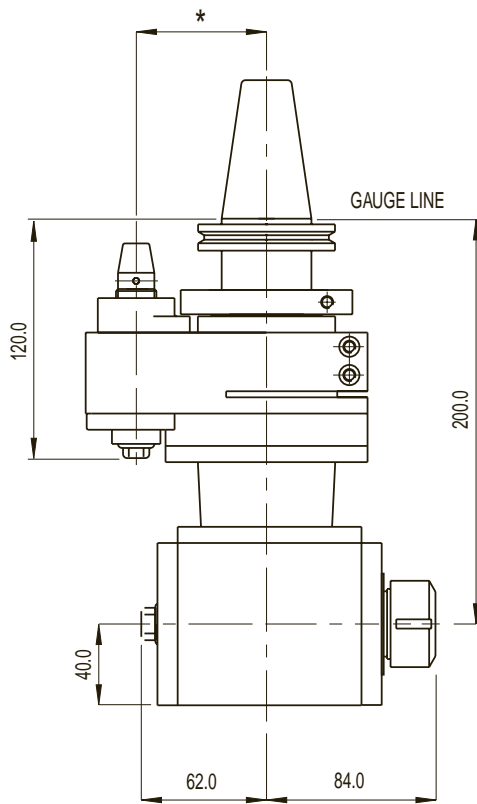
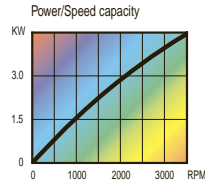
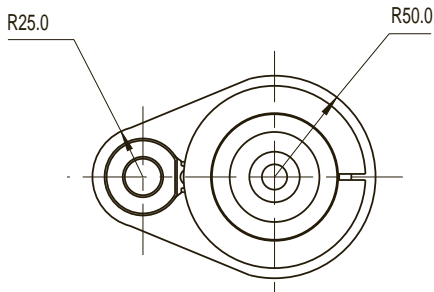


RAD 160 EX

EXTENDED RIGHT ANGLE MILL/DRILL/TAP



RAD 160/200

RAD 160/240

RAD 160/280

The RAD-200/240/280 is the extended version of the RAD-160 and is able to accommodate end mills, drills and tension tap collets.

- Auto tool change capability
- Alternative drive tapers available
- Maintenance free sealed unit

* Pin centre distance to suit application

Max. speed	3,500 rpm
Max. tool shank dia.	16 mm / 5/8"
Max. tapping size	M12 / 1/2"
Ratio	1:1
Rotation	Opposite
Drive taper	40 BT-CT-DIN-HSK
Tool holding	Collet chuck ER25
Max. weight without tooling	200 - 8.5 kg / 19 lbs
Max. weight without tooling	240 - 10.5 kg / 23 lbs
Max. weight without tooling	280 - 12.5 kg / 28 lbs